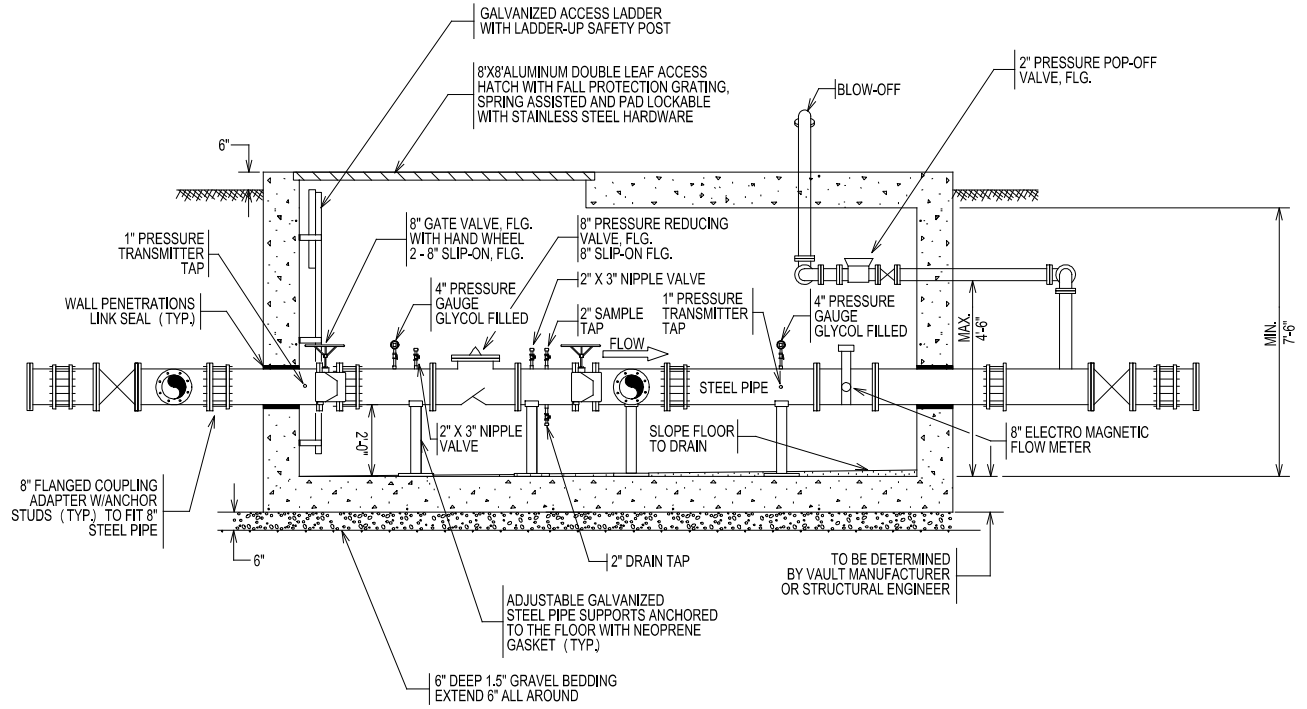


12:41:30 PM

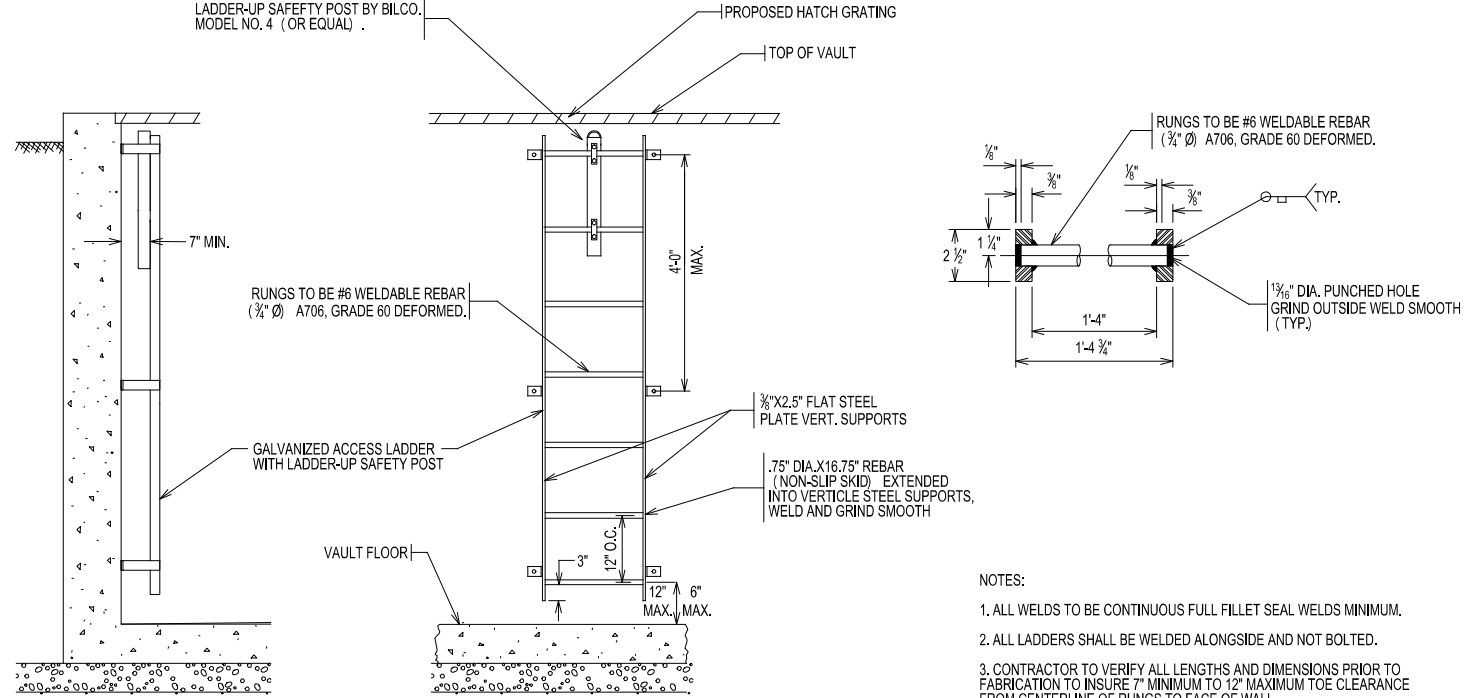
1/22/2019

Z:\Projects\06-06 CWIP Disconnect-PRV\06 - CADD Files\06-70 - Utilities\06-06 CWIP WAT-PLN-01A PRV-DET.dgn



### SECTION VIEW

(REFER TO SAWS STD DWG. DD-901-06 SHEET 2 OF 3) NOT TO SCALE



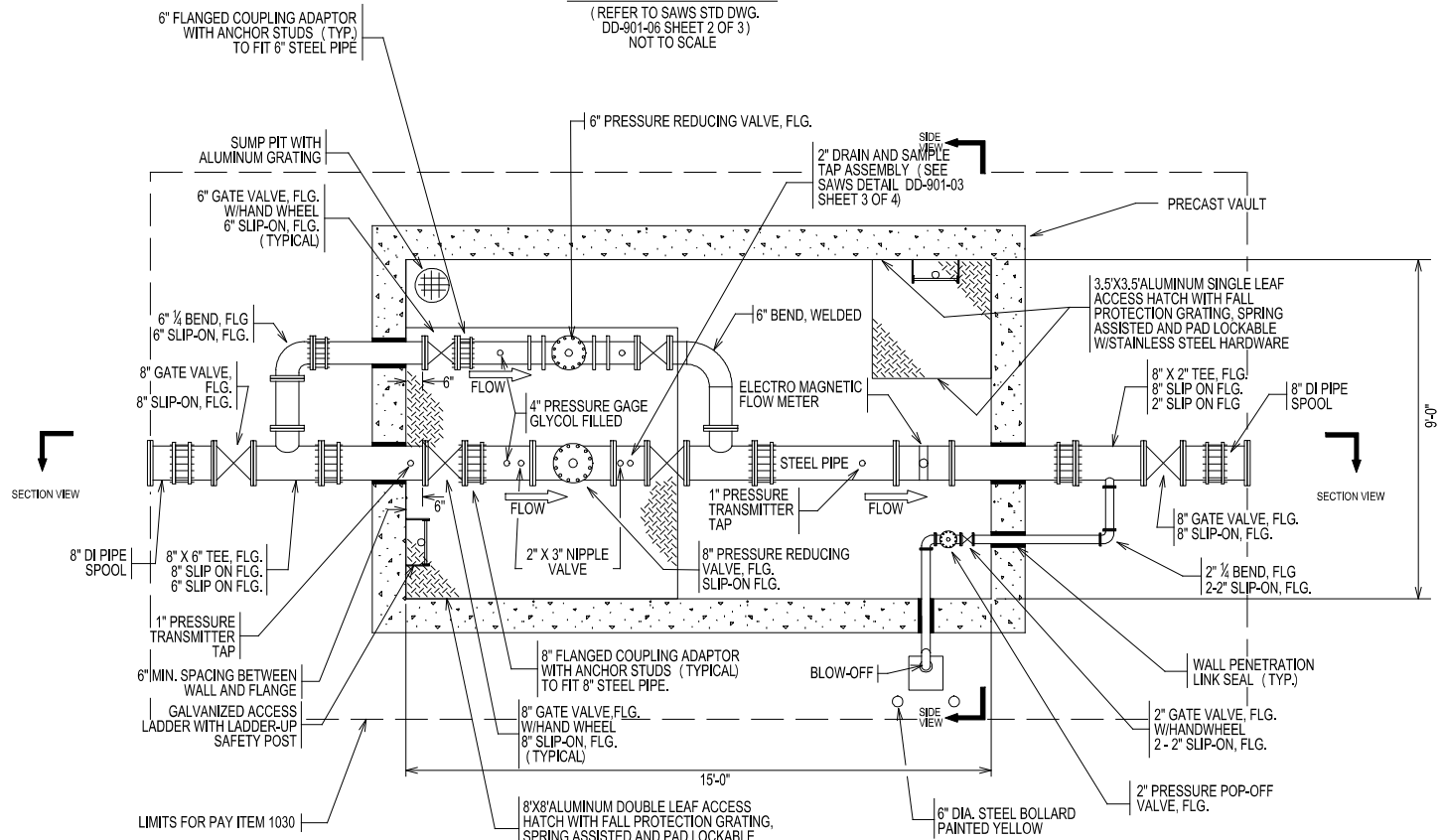
### VAULT LADDER DETAILS

(REFER TO SAWS STD DWG. DD-900-13 SHEET 6 OF 11) (NO SEPARATE PAY ITEM) NOT TO SCALE

- NOTES:
1. ALL WELDS TO BE CONTINUOUS FULL FILLET SEAL WELDS MINIMUM.
  2. ALL LADDERS SHALL BE WELDED ALONGSIDE AND NOT BOLTED.
  3. CONTRACTOR TO VERIFY ALL LENGTHS AND DIMENSIONS PRIOR TO FABRICATION TO INSURE 7" MINIMUM TO 12" MAXIMUM TOE CLEARANCE FROM CENTERLINE OF RUNGS TO FACE OF WALL.

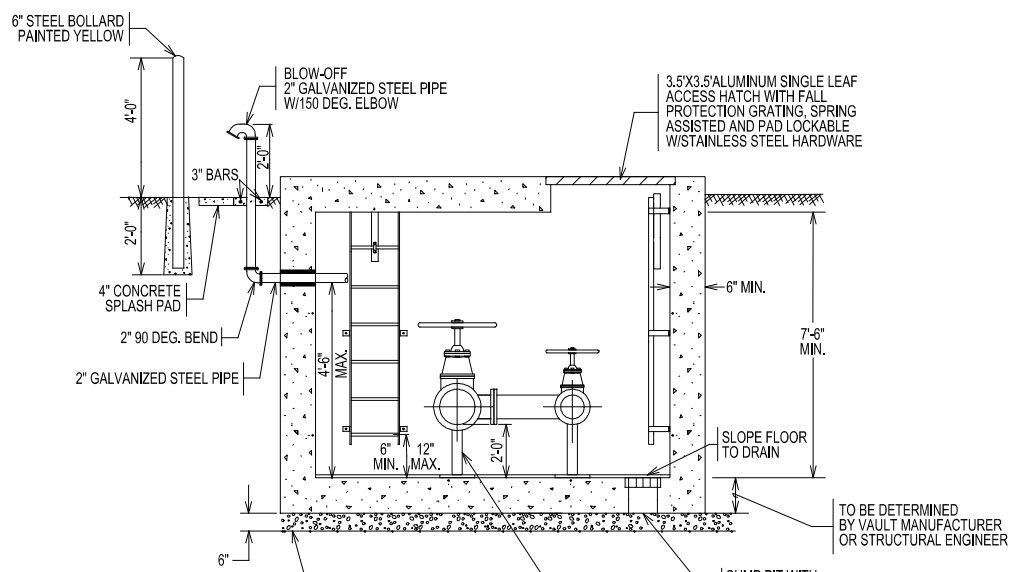
THIS DOCUMENT IS RELEASED FOR THE PURPOSE OF PRELIMINARY REVIEW UNDER THE AUTHORITY OF ERNEST T. MAESTAS, P.E. 52938 ON 1/22/2019 . IT IS NOT TO BE USED FOR CONSTRUCTION OR BIDDING PURPOSES.

40% SUBMITTAL



### PLAN VIEW

(REFER TO SAWS STD DWG. DD-901-06 SHEET 1 OF 3) NOT TO SCALE



### SIDE VIEW

(REFER TO SAWS STD DWG. DD-901-06 SHEET 3 OF 3) NOT TO SCALE

- NOTES:
1. ALL VALVES INSIDE THE VAULT MUST OPEN LEFT (COUNTERCLOCKWISE) .
  2. ALL VALVES OUTSIDE THE VAULT MUST OPEN RIGHT (CLOCKWISE) .
  3. ALL PIPING MUST BE LINED WITH AN APPROVED N.S.F. EPOXY COATING 10 MILS MINIMUM.
  4. ALL PIPING INSIDE VAULT MUST BE PAINTED WITH AN EPOXY PRIMER 4 TO 6 MILS AND A POLYURETHANE TOP COAT (BLUE) 4 TO 6 MILS.
  5. PRESSURE REDUCING VALVES WILL BE SUPPLIED WITH LIMIT SWITCHES FOR OPEN AND CLOSE INDICATION TO S.A.W.S. SCADA SYSTEM. EACH VALVE MUST HAVE TWO PRESSURE GAUGES FOR SUPPLY AND DISCHARGE PRESSURES.
  6. ALL PRESSURE TRANSMITTERS, PRESSURE REDUCING VALVES AND FLOW METERS MUST BE CONNECTED TO S.A.W.S. SCADA SYSTEM.

## PRESSURE REDUCING VALVE ASSEMBLY

**MAESTAS**  
11550 IH 10 WEST, STE. 350 SAN ANTONIO, TX 78230  
(210) 366-1988 TBPE No.: F-333

No.	Revision	Drawn	Approved	Date

**REVISIONS**

**CWIP WATER MAIN DISCONNECTS AND PRV  
PRV VAULT DETAILS  
SHEET 1 OF 1**

DEVELOPER: SAN ANTONIO WATER SYSTEM  
CONT. BUDGET PROJ. #

SUBMITTED \_\_\_\_\_  
APPROVED \_\_\_\_\_

MAP No. \_\_\_\_\_ SHEET 7  
SECT. No. \_\_\_\_\_ OF 28  
DR. CAD CK. ETM JOB No. 18-4013